



pinch clip

The Xtra Pinch Clip rod clip is ideal for air conditioning line set pairs.



Channel



Rod



Surface

KEY FEATURES

- Pinch Clip locates quickly to M8 and M10 studding
- Robust metal construction
- Snap shut lid secures pipe set
- Quick and easy pipe installation
- Wide metal construction for greater pipe support
- Can also be used for surface mount
- Ideal for when you need to meet fire regulations


SPECIFICATIONS

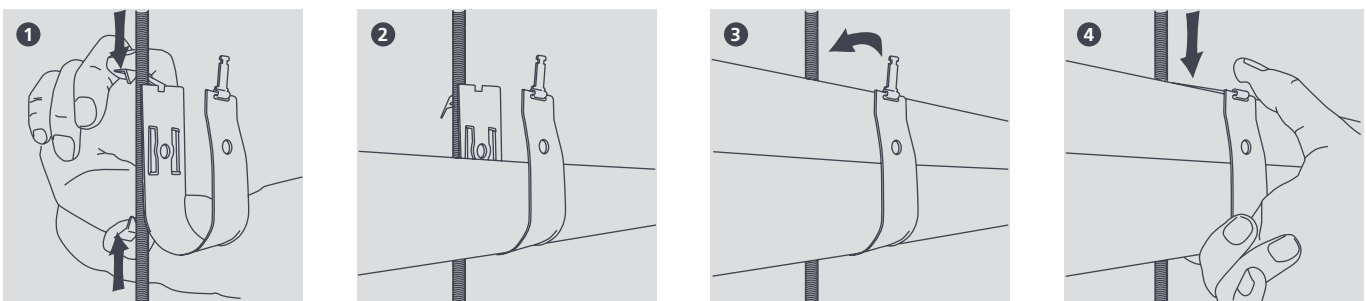
Materials of construction	Powder coated mild steel
Max. temp	1000°C
Max. rec. distance per clip	1.2m

SIZING OPTIONS

Description	Liquid*	Gas*	Part No.	Pack Qty
2	3/8"	5/8"	B6561	10
3	1/2"	7/8"	B6562	10
4	5/8"	1 1/8"	B6563	10

* Approximate pipe sizes (allowing for insulation)

 For further details please refer to our website aspenpumps.com/xtra



Information correct at time of going to press.